

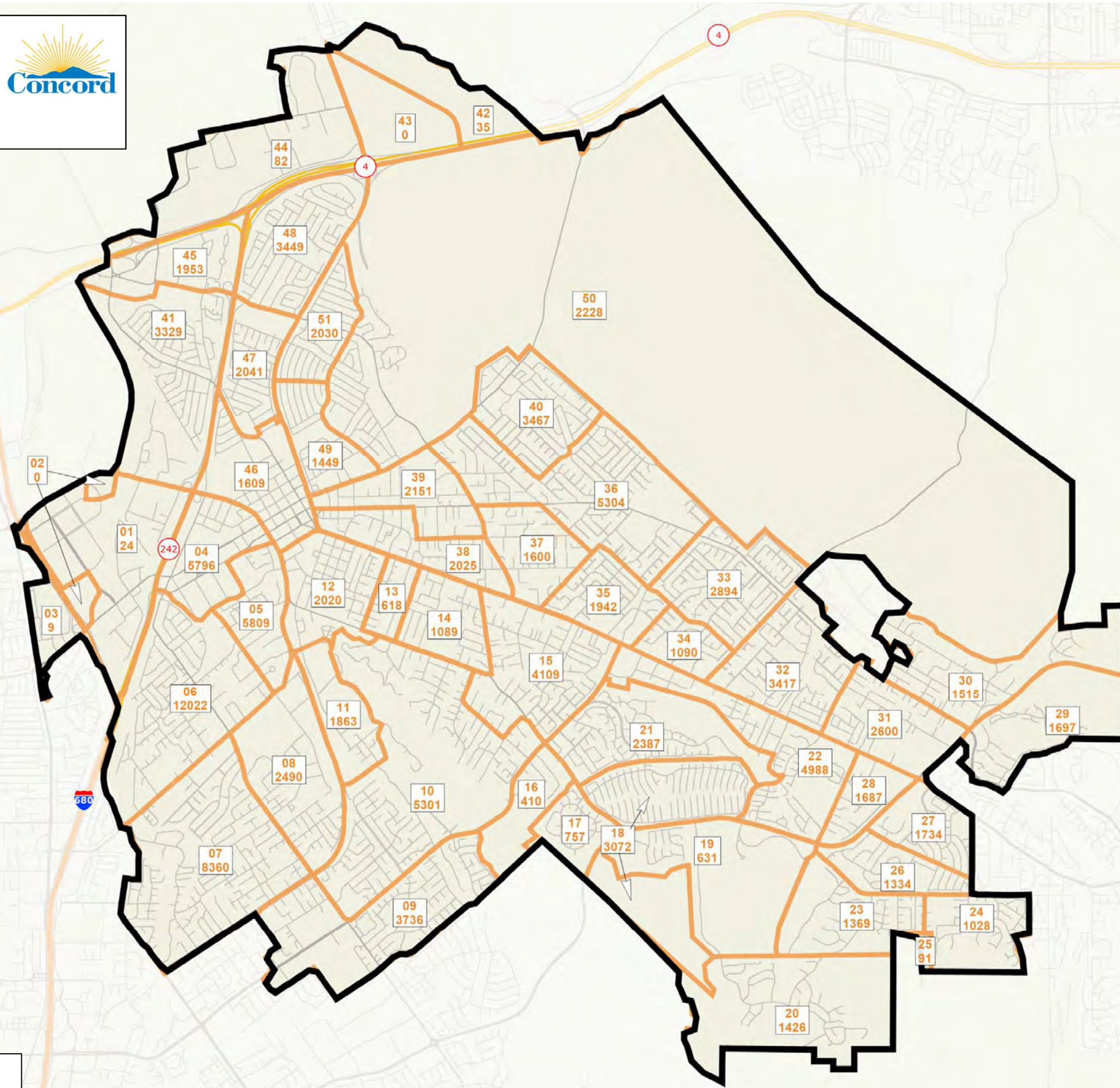
City of Concord Slice Geography



Slices are based on precinct boundaries. If a census block is divided by two or more precincts, those precincts have been combined into the same slice, unless no population was affected by the division.

First number is a two-digit unique identifier. Second number is the total population of the slice.

Prepared by **WAGAMAN STRATEGIES**
www.wagamanstrategies.com



Slice	Precincts	Population
1	801A	24
2	801B	0
3	801C	9
4	116	5796
5	118	5809
6	117, 145, 146	12022
7	149, 150, 151, 163, 165	8360
8	148	2490
9	154A, 154B, 154C, 155, 164	3736
10	127, 140, 147A, 152, 153	5301
11	119B, 147B	1863
12	119A	2020
13	124B	618
14	124A	1089
15	125, 126	4109
16	142A	410
17	142B	757
18	143B, 144	3072
19	143A	631
20	161	1426
21	132, 141, 901	2387
22	131, 138, 139	4988
23	156	1369
24	160B	1028
25	160A	91
26	157	1334
27	158	1734
28	137	1687
29	159	1697
30	135A, 135B	1515
31	136	2600
32	133, 134	3417
33	128, 129	2894
34	130	1090
35	123	1942
36	112, 115, 122	5304
37	121	1600
38	120	2025
39	111	2151
40	113, 114	3467
41	101, 102	3329
42	802A	35
43	802B	0
44	802C	82
45	103A, 103B	1953
46	110	1609
47	106	2041
48	104, 105	3449
49	108	1449
50	109, 803A, 803B	2228
51	107	2030

Map layers

- City of Concord
- Street
- Concord Slice